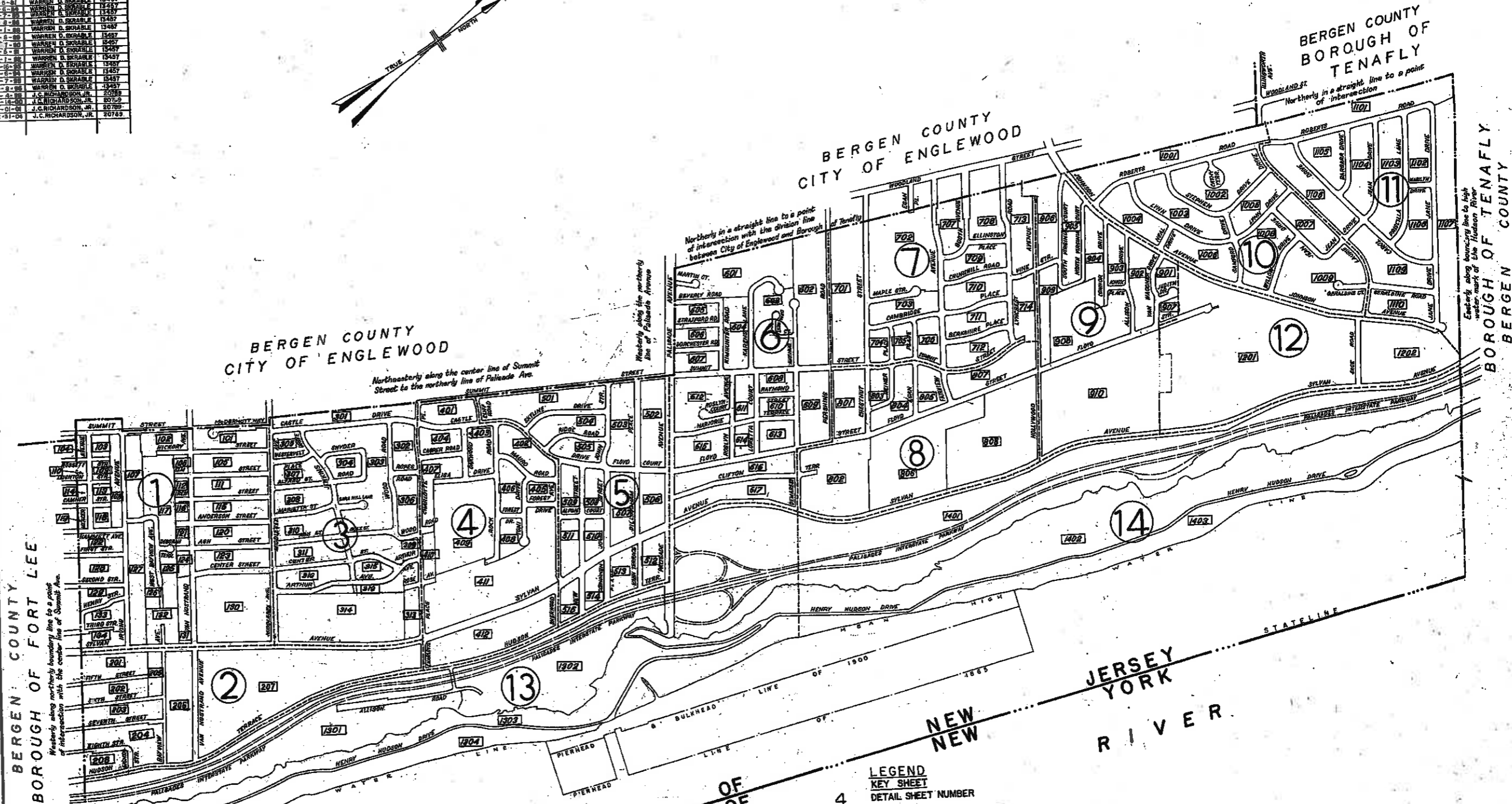
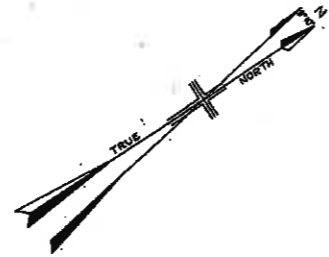


REVISIONS		
DATE	NAME	NO.
3-1-79	WARREN D. SHARPLE	13457
11-1-81	WARREN D. SHARPLE	13457
12-1-82	WARREN D. SHARPLE	13457
10-8-83	WARREN D. SHARPLE	13457
12-1-85	WARREN D. SHARPLE	13457
6-2-88	WARREN D. SHARPLE	13457
5-2-88	WARREN D. SHARPLE	13457
12-1-88	WARREN D. SHARPLE	13457
10-20-88	WARREN D. SHARPLE	13457
7-1-88	WARREN D. SHARPLE	13457
5-7-88	WARREN D. SHARPLE	13457
10-2-88	WARREN D. SHARPLE	13457
11-1-88	J.C. RICHARDSON, JR.	20789
11-01-01	J.C. RICHARDSON, JR.	20789
12-31-04	J.C. RICHARDSON, JR.	20789



BERGEN COUNTY  
BOROUGH OF FORT LEE

BERGEN COUNTY  
CITY OF ENGLEWOOD

BERGEN COUNTY  
BOROUGH OF TENAFLY

BOROUGH OF TENAFLY  
BERGEN COUNTY

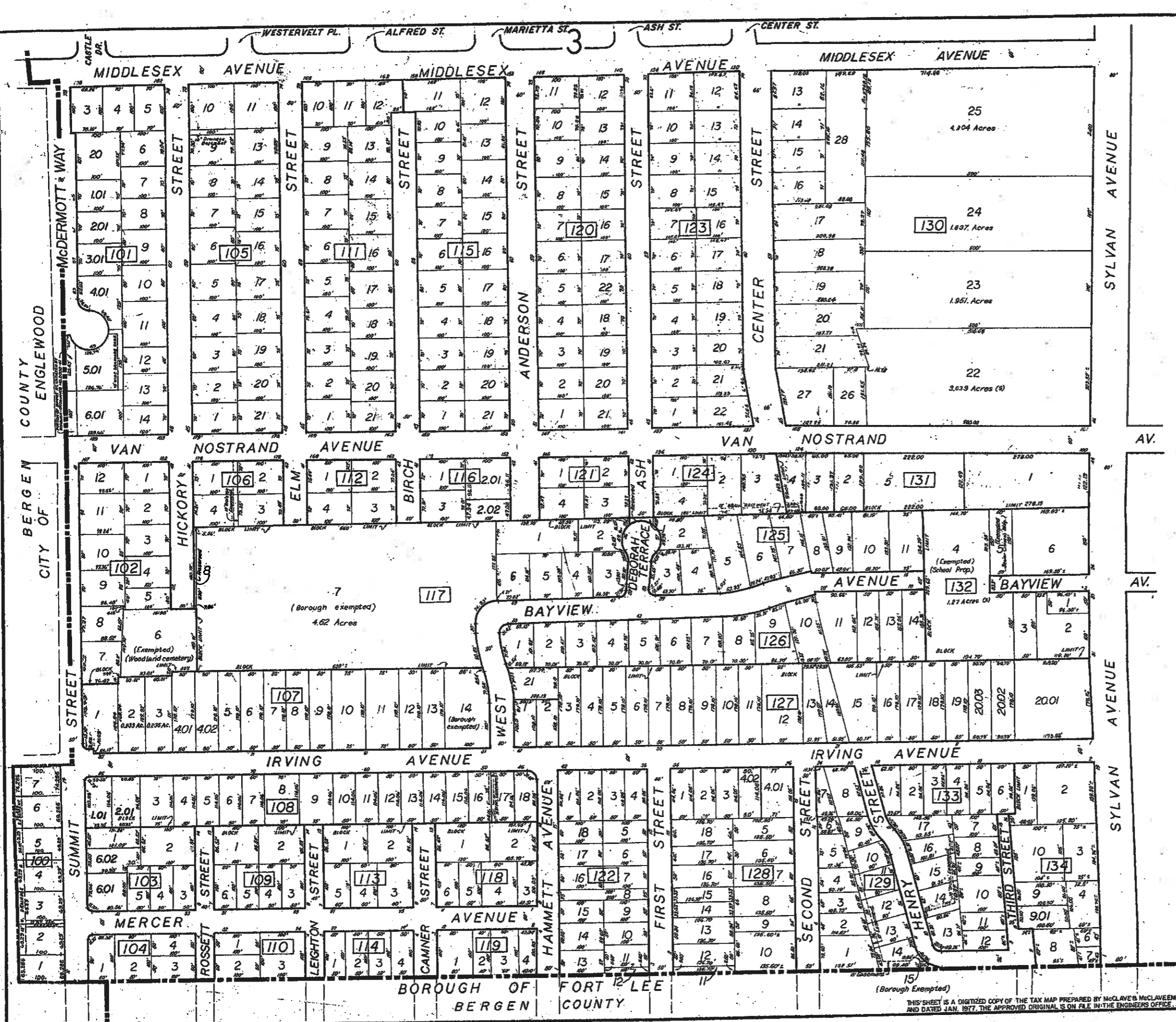
**NOTE:**  
BLOCK NUMBERS WITH 3 DIGITS, SHEET NUMBER IS INDICATED BY 1st. DIGIT. BLOCK NUMBERS WITH 4 DIGITS, SHEET NUMBER IS INDICATED BY 1st. TWO DIGITS.  
FOR EXAMPLE:  
FOR BLOCK 101 - SHEET NO. IS 1  
FOR BLOCK 100 - SHEET NO. IS 10  
THE AREAS, BOUNDARIES, AND DIMENSIONS SHOWN ON THIS TAX MAP ARE DERIVED FROM GROUND SURVEYS, AERIAL SURVEYS AND RECORDED PLANS. MAPS, DEEDS AND WILLS AND ARE TO BE USED FOR ASSESSMENT PURPOSES ONLY. TO SHOW CONDITIONS AS OF NOVEMBER 2001, THIS TAX MAP SUPERSEDES THE TAX MAP APPROVED JULY 1972.

I hereby certify that this map and the survey has been made under my immediate supervision, and complies with the laws of the State of New Jersey.  
*James C. McClave*  
N.J. Lic. # 8505

**LEGEND**  
KEY SHEET  
4 DETAIL SHEET NUMBER  
501 BLOCK NUMBER  
— SHEET LIMIT  
— BLOCK LIMIT  
100 DETAIL SHEETS  
BLOCK NUMBER  
5 LOT NUMBER

NEW JERSEY DEPARTMENT OF THE TREASURY  
DIVISION OF TAXATION  
LOCAL PROPERTY AND PUBLIC UTILITY BRANCH  
APPROVED AS A TAX MAP PURSUANT TO THE PROVISIONS OF CHAPTER 172, LAWS OF 1962, N.J.S.A. FOR THE DIRECTOR, DIVISION OF TAXATION  
J.C. McClave  
N.J. Lic. # 8505  
SERIAL N° 5710

**TAX MAP**  
**BOROUGH OF ENGLEWOOD CLIFFS**  
BERGEN COUNTY, NEW JERSEY  
SCALE 1" = 500' JANUARY 1977  
**JAMES C. McCLAVE**  
**McCLAVE & McCLAVE**  
600 GORGE ROAD CLIFFSIDE PARK, N.J.  
TO SHOW CONDITIONS AS OF NOV 2001

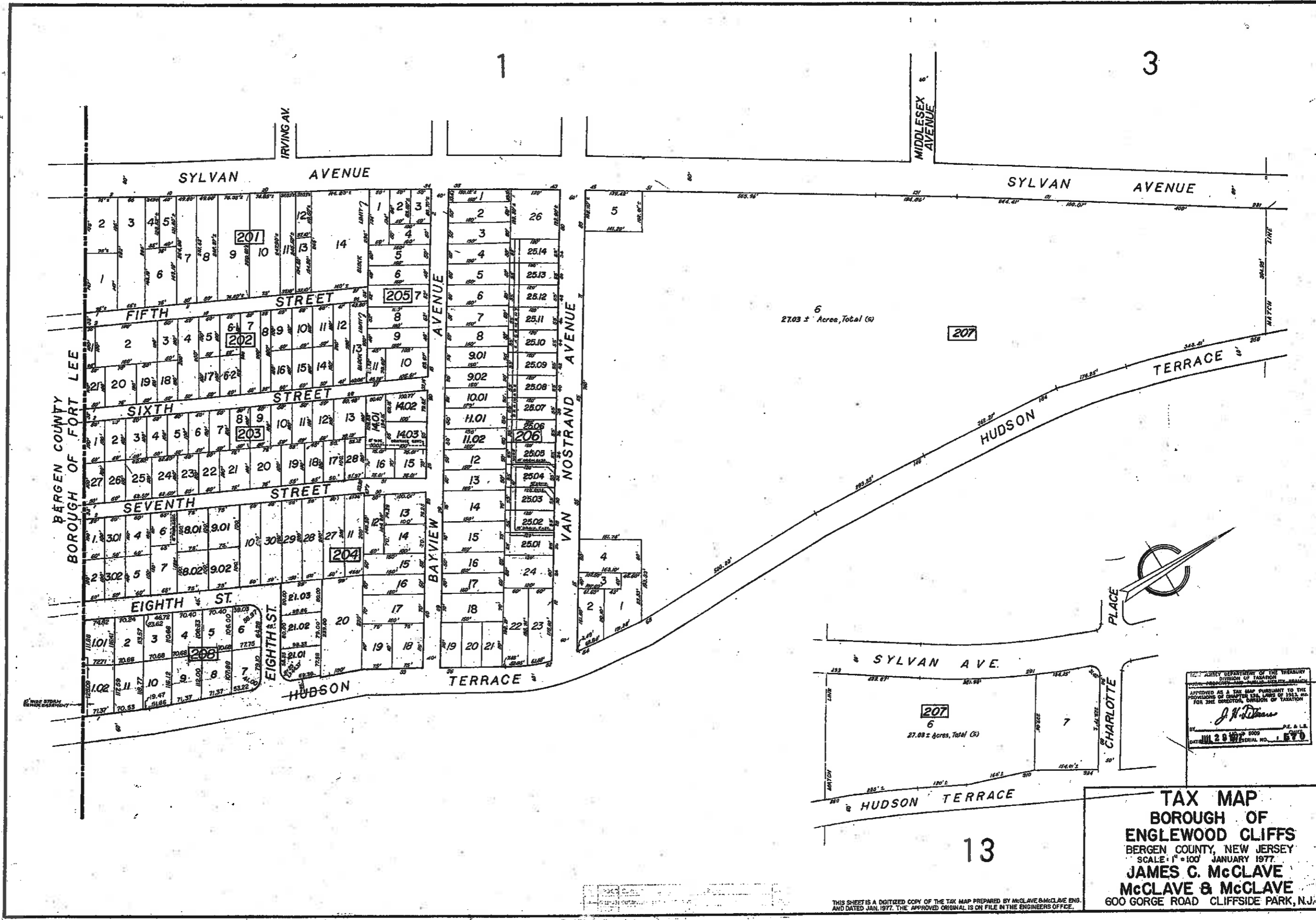


2

NEW JERSEY DEPARTMENT OF THE TREASURY  
 DIVISION OF TAXATION  
 LOCAL PROPERTY AND PUBLIC UTILITY BRANCH  
 APPROVED AS A TAX MAP PURSUANT TO THE  
 PROVISIONS OF CHAPTER 175, LAWS OF 1975, A.C.  
 FOR THE DIRECTOR, DIVISION OF TAXATION  
 JUL 2 1977 SERIAL NO. 1876

**TAX MAP**  
**BOROUGH OF**  
**ENGLEWOOD CLIFFS**  
 BERGEN COUNTY, NEW JERSEY  
 SCALE: 1" = 100' JANUARY 1977  
**JAMES C. McCLAVE**  
**McCLAVE & McCLAVE**  
 600 GORGE ROAD CLIFFSIDE PARK, N.J.

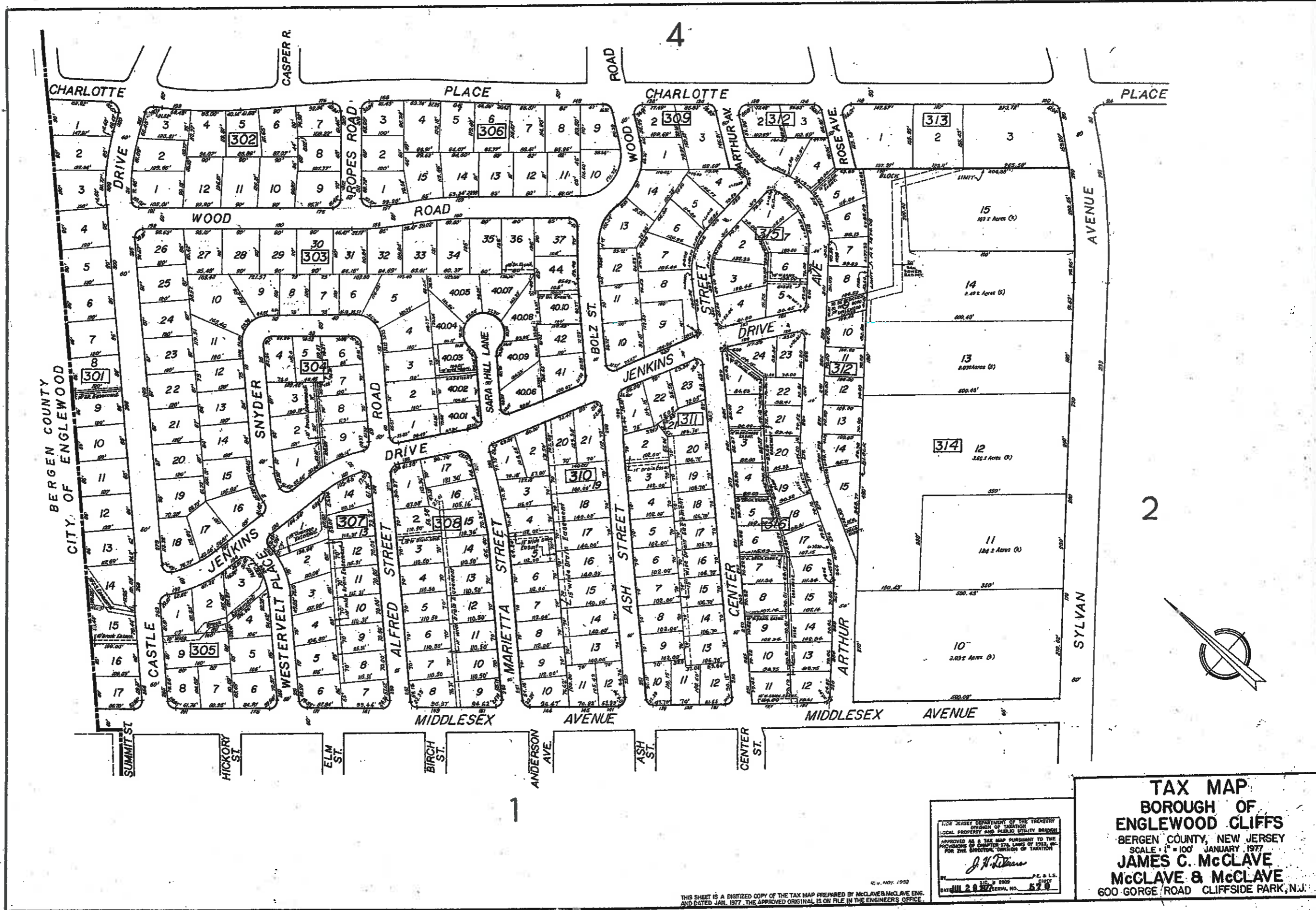
THIS SHEET IS A DIGITIZED COPY OF THE TAX MAP PREPARED BY McCLAVE & McCLAVE AND DATED JAN. 1977. THE APPROVED ORIGINAL IS ON FILE IN THE ENGINEERS OFFICE.



JERSEY DEPARTMENT OF THE TREASURY  
DIVISION OF TAXATION  
APPROVED AS A TAX MAP PURSUANT TO THE  
PROVISIONS OF CHAPTER 124, LAWS OF 1951, P.L.  
FOR THE DIRECTOR, DIVISION OF TAXATION  
*J. H. Deane*  
DATE: JUN 29 1977 SERIAL NO. 1570

**TAX MAP**  
**BOROUGH OF**  
**ENGLEWOOD CLIFFS**  
BERGEN COUNTY, NEW JERSEY  
SCALE: 1" = 100' JANUARY 1977  
**JAMES C. McCLAVE**  
**McCLAVE & McCLAVE**  
600 GORGE ROAD CLIFFSIDE PARK, N.J.

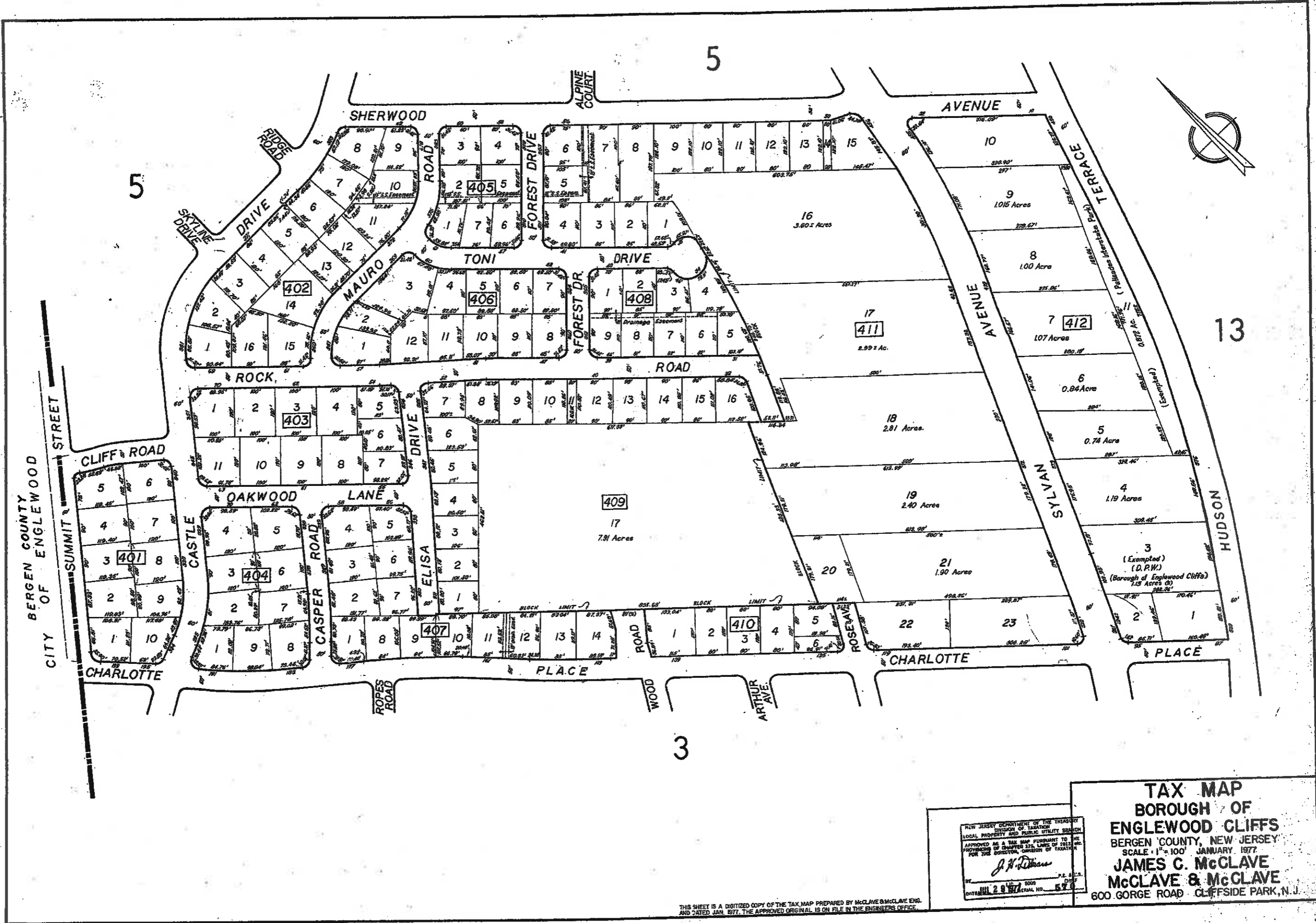
THIS SHEET IS A DIGITIZED COPY OF THE TAX MAP PREPARED BY McCLAVE & McCLAVE, ENG.  
AND DATED JAN. 1977. THE APPROVED ORIGINAL IS ON FILE IN THE ENGINEERS OFFICE.



NEW JERSEY DEPARTMENT OF THE TREASURY  
 DIVISION OF TAXATION  
 LOCAL PROPERTY AND PUBLIC UTILITY BRANCH  
 APPROVED AS A TAX MAP PURSUANT TO THE  
 PROVISIONS OF CHAPTER 174, LAWS OF 1952, AS  
 AMENDED, FOR THE DIRECTOR, DIVISION OF TAXATION  
*J. H. [Signature]*  
 JUL 20 1977

**TAX MAP**  
**BOROUGH OF**  
**ENGLEWOOD CLIFFS**  
 BERGEN COUNTY, NEW JERSEY  
 SCALE: 1" = 100' JANUARY, 1977  
**JAMES C. McCLAVE**  
**McCLAVE & McCLAVE**  
 600 GORGE ROAD CLIFFSIDE PARK, N.J.

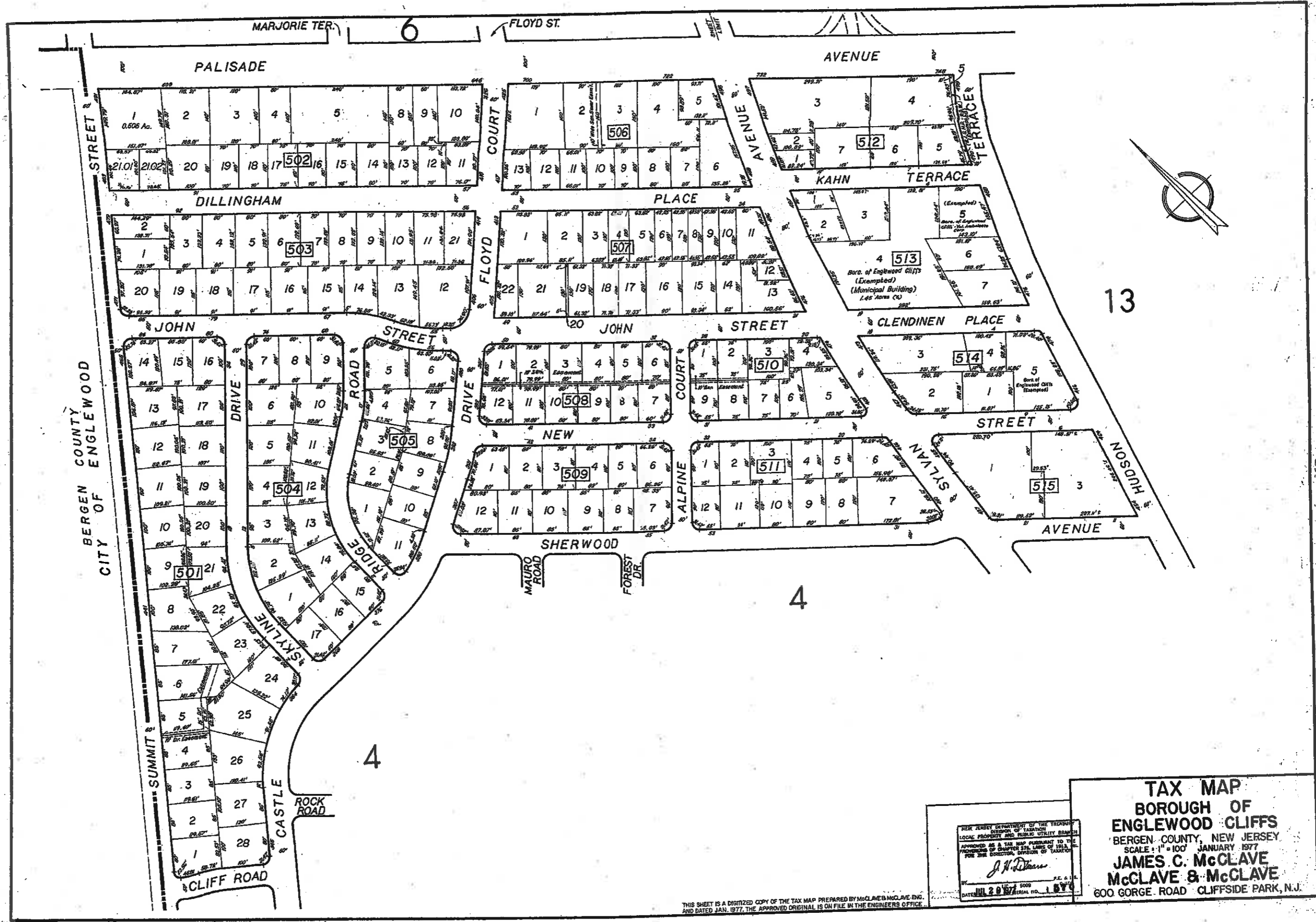
THIS SHEET IS A DIGITIZED COPY OF THE TAX MAP PREPARED BY McCLAVE, McCLAVE ENG. AND DATED JAN. 1977. THE APPROVED ORIGINAL IS ON FILE IN THE ENGINEER'S OFFICE.



NEW JERSEY DEPARTMENT OF THE TREASURY  
 DIVISION OF TAXATION  
 LOCAL PROPERTY AND PUBLIC UTILITY SEARCH  
 APPROVED AS A TAX MAP PURSUANT TO THE  
 PROVISIONS OF CHAPTER 175, LAWS OF 1915 AND  
 FOR THE DIRECTOR, DIVISION OF TAXATION  
*J. H. DeWitt*  
 JUL 29 1977  
 57

**TAX MAP**  
**BOROUGH OF**  
**ENGLEWOOD CLIFFS**  
 BERGEN COUNTY, NEW JERSEY  
 SCALE: 1" = 100' JANUARY, 1977  
**JAMES C. McCLAVE**  
**McCLAVE & McCLAVE**  
 600 GORGE ROAD CLIFFSIDE PARK, N.J.

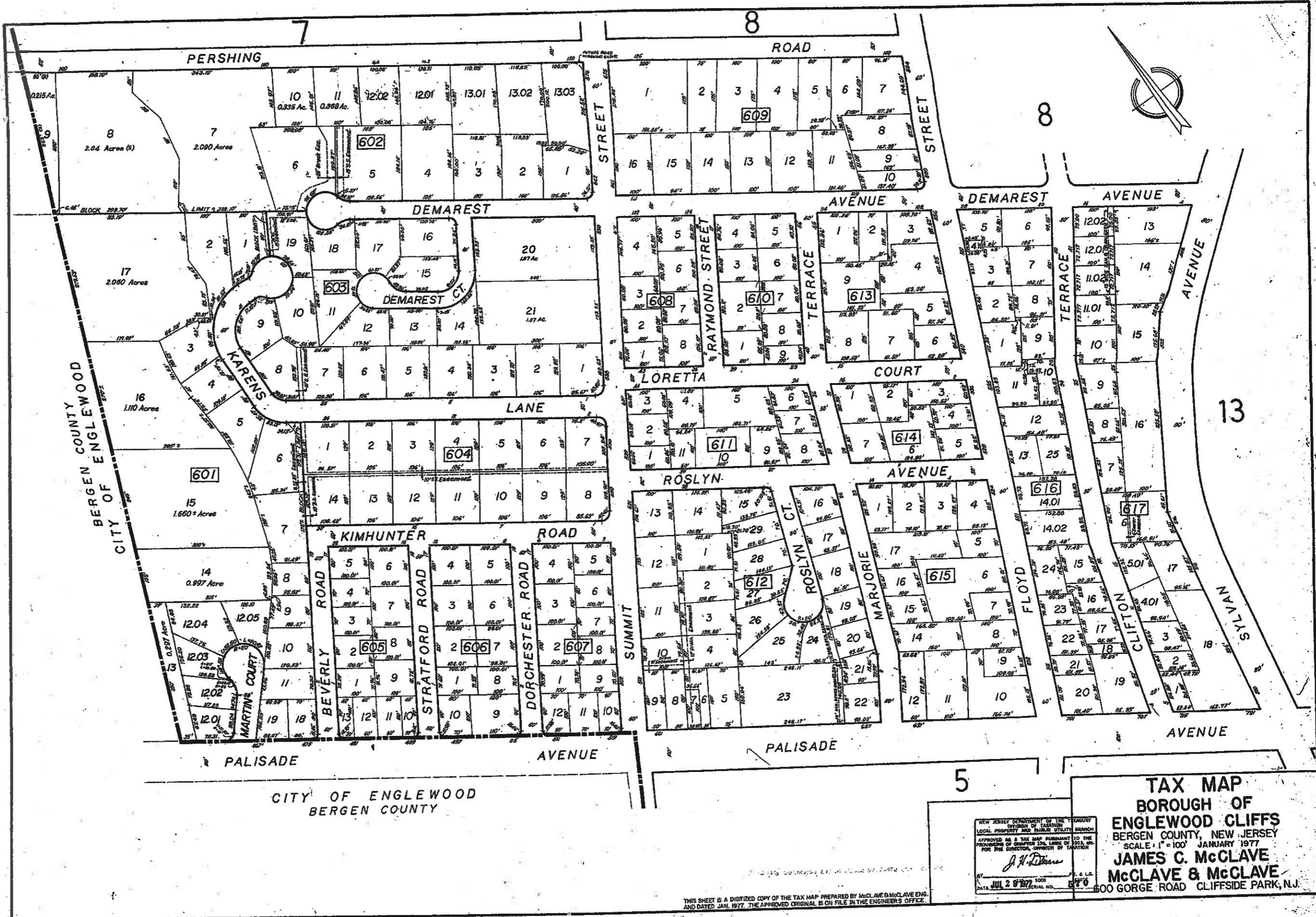
THIS SHEET IS A DIGITIZED COPY OF THE TAX MAP PREPARED BY McCLAVE & McCLAVE ENG. AND DATED JAN. 1977. THE APPROVED ORIGINAL IS ON FILE IN THE ENGINEERS OFFICE.



NEW JERSEY DEPARTMENT OF THE TREASURY  
 DIVISION OF TAXATION  
 LOCAL PROPERTY AND PUBLIC UTILITY BRANCH  
 APPROVED AS A TAX MAP PURSUANT TO THE  
 PROVISIONS OF CHAPTER 275, LAWS OF 1975,  
 FOR THE DIRECTOR, DIVISION OF TAXATION  
*J. H. Deane*  
 DATE: JUL 20 1977 SERIAL NO. 1576

**TAX MAP**  
**BOROUGH OF**  
**ENGLEWOOD CLIFFS**  
 BERGEN COUNTY, NEW JERSEY  
 SCALE: 1" = 100' JANUARY 1977  
**JAMES C. McCLAVE**  
**McCLAVE & McCLAVE**  
 600 GORGE ROAD CLIFFSIDE PARK, N.J.

THIS SHEET IS A DIGITIZED COPY OF THE TAX MAP PREPARED BY McCLAVE & McCLAVE, INC. AND DATED JAN. 1977. THE APPROVED ORIGINAL IS ON FILE IN THE ENGINEERS OFFICE.

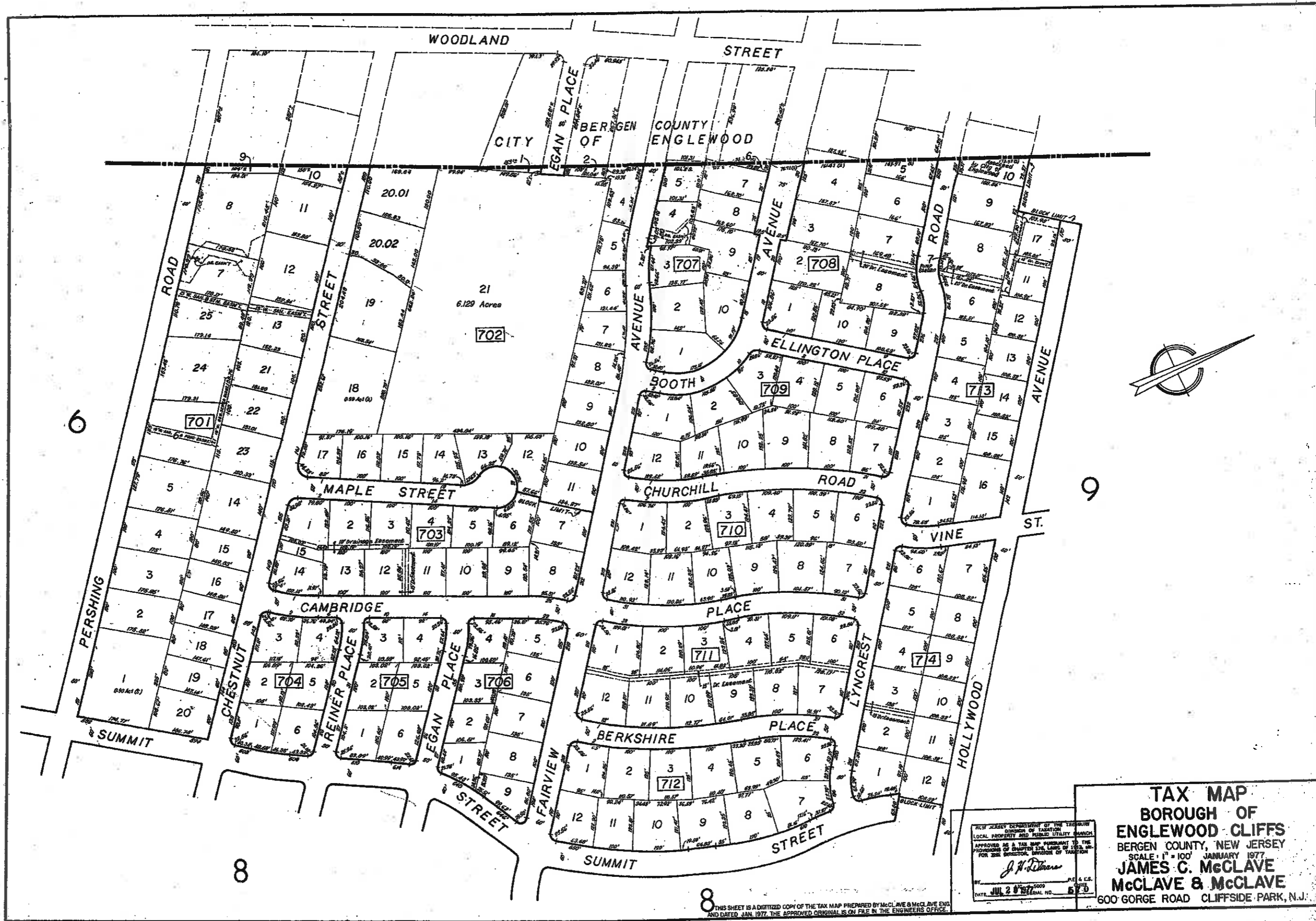


CITY OF ENGLEWOOD  
BERGEN COUNTY

**TAX MAP**  
**BOROUGH OF ENGLEWOOD CLIFFS**  
 BERGEN COUNTY, NEW JERSEY  
 SCALE: 1" = 100' JANUARY 1977  
**JAMES C. McCLAVE**  
**McCLAVE & McCLAVE**  
 600 GORGE ROAD CLIFFSIDE PARK, N.J.

NEW JERSEY DEPARTMENT OF THE TREASURY  
 DIVISION OF TAXATION  
 LOCAL PROPERTY AND PUBLIC UTILITY BRANCH  
 APPROVED AS A TAX MAP PURSUANT TO THE  
 PROVISIONS OF CHAPTER 124, LEGISLATIVE  
 STATUTES OF NEW JERSEY  
 FOR THE DIRECTOR, DEPARTMENT OF TAXATION  
*J. H. Deane*  
 DATE JUL 2 8 1977 SERIAL NO. 870

THIS SHEET IS A DIGITIZED COPY OF THE TAX MAP PREPARED BY McCLAVE & McCLAVE ENG.  
 AND DATED JAN. 1977. THE APPROVED ORIGINAL IS ON FILE IN THE ENGINEER'S OFFICE.

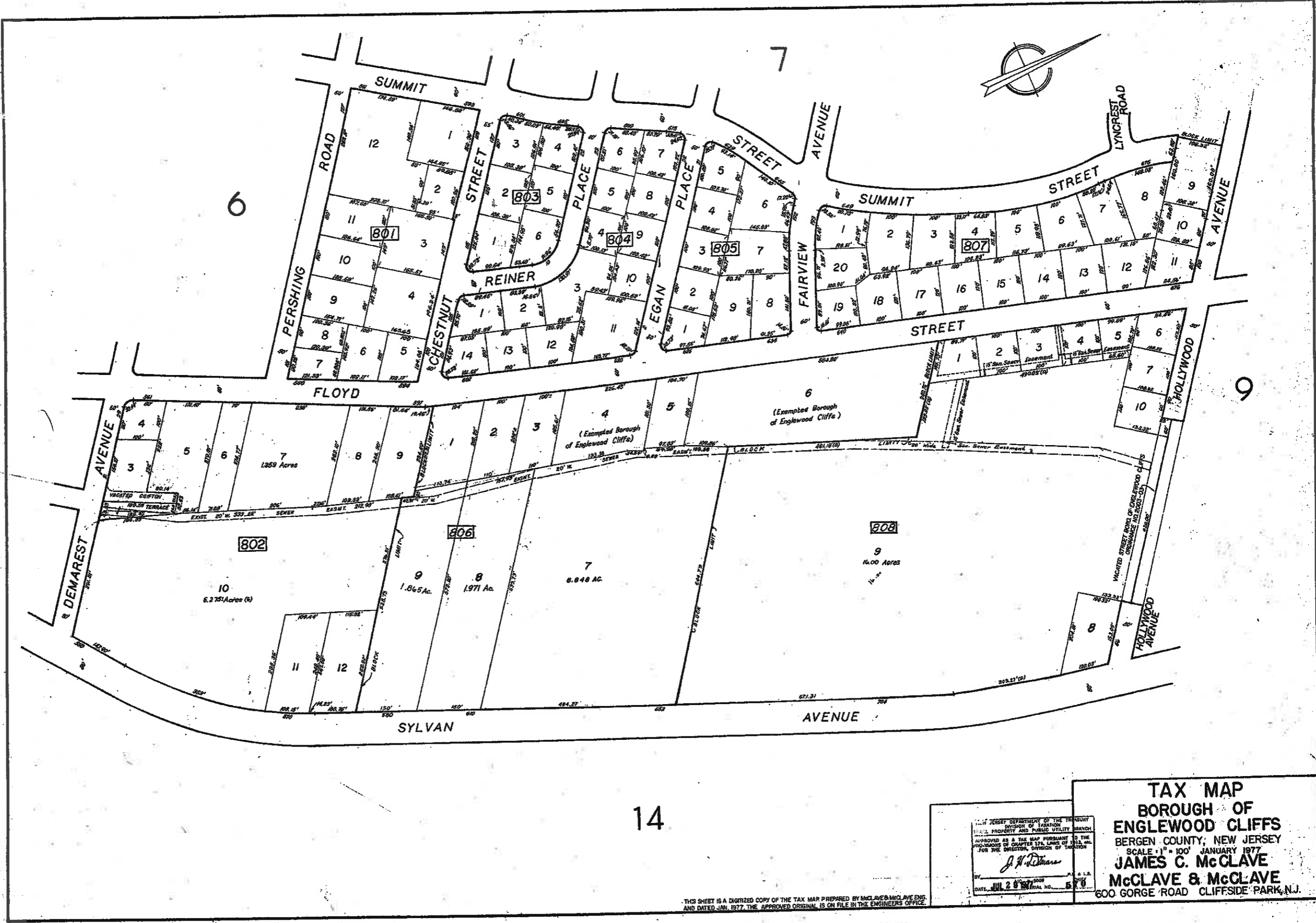


NEW JERSEY DEPARTMENT OF THE TREASURY  
 DIVISION OF TAXATION  
 LOCAL PROPERTY AND PUBLIC UTILITY TAXES  
 APPROVED AS A TAX MAP PURSUANT TO THE  
 PROVISIONS OF CHAPTER 124, LEADS OF 1975, N.J.A.C.  
 17:27 FOR THE DIRECTOR, DIVISION OF TAXATION  
*J. H. Deane*  
 BY: JUL 2 1977  
 DATE: JUL 2 1977  
 FILE & C.S. NO. 679

**TAX MAP**  
**BOROUGH OF**  
**ENGLEWOOD CLIFFS**  
 BERGEN COUNTY, NEW JERSEY  
 SCALE: 1" = 100' JANUARY 1977  
**JAMES C. McCLAVE**  
**McCLAVE & McCLAVE**  
 600 GORGE ROAD CLIFFSIDE PARK, N.J.

THIS SHEET IS A DIGITIZED COPY OF THE TAX MAP PREPARED BY McCLAVE & McCLAVE ENG AND DATED JAN. 1977. THE APPROVED ORIGINAL IS ON FILE IN THE ENGINEERS OFFICE.



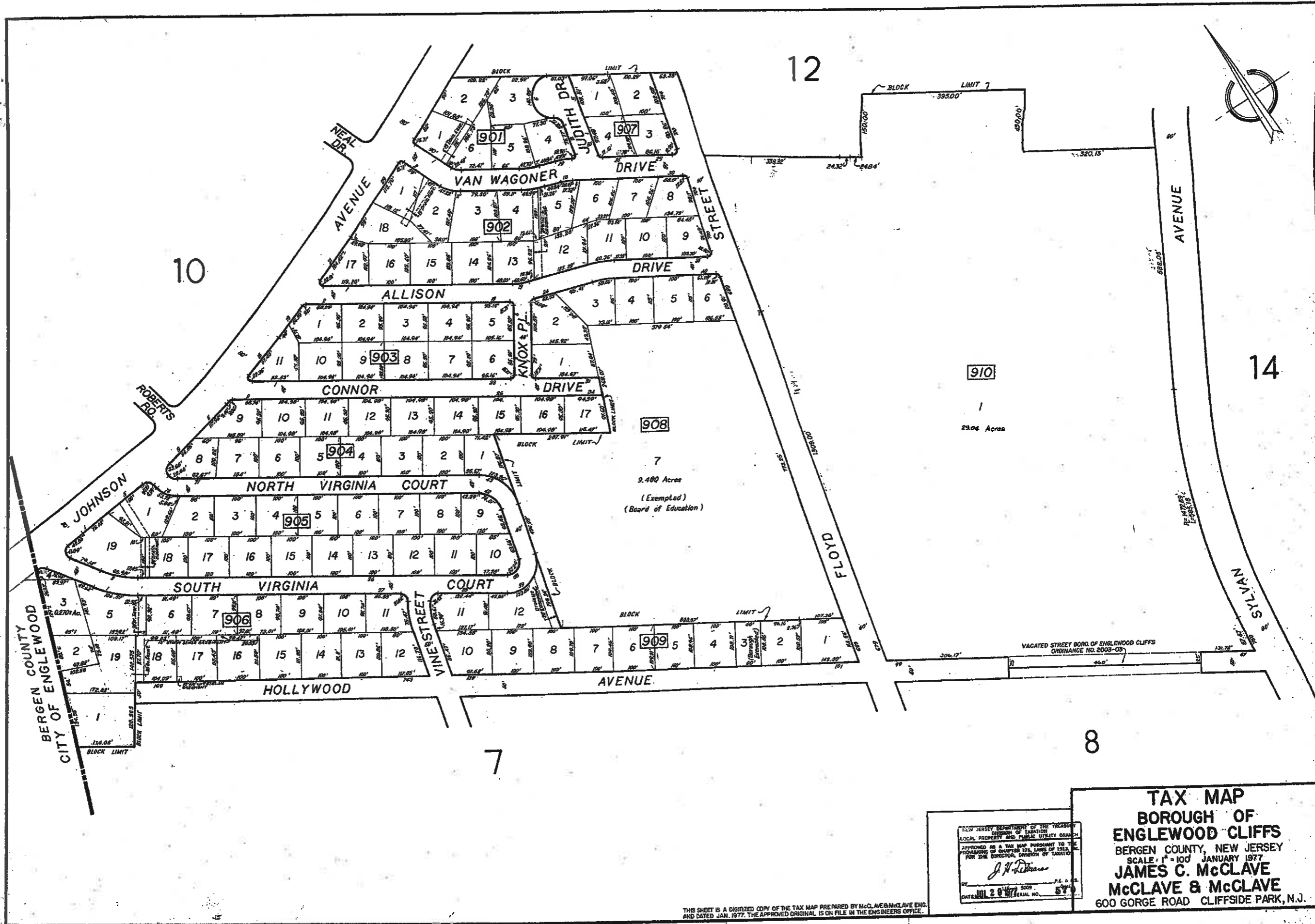


14

STATE OF NEW JERSEY DEPARTMENT OF THE TREASURY  
 DIVISION OF TAXATION  
 PROPERTY AND PUBLIC UTILITY BRANCH  
 APPROVED AS A TAX MAP PURSUANT TO THE  
 PROVISIONS OF CHAPTER 174, LEGISLATIVE  
 ACT OF 1954, P.L. 1954-103, AS AMENDED  
 FOR THE DIRECTOR, DIVISION OF TAXATION  
*J. H. [Signature]*  
 BY: [Signature]  
 DATE: JUL 2 8 1977  
 TITLE: [Blank]  
 SERIAL NO.: 5 2 0

**TAX MAP**  
**BOROUGH OF**  
**ENGLEWOOD CLIFFS**  
 BERGEN COUNTY, NEW JERSEY  
 SCALE: 1" = 100' JANUARY 1977  
**JAMES C. McCLAVE**  
**McCLAVE & McCLAVE**  
 600 GORGE ROAD CLIFFSIDE PARK, N.J.

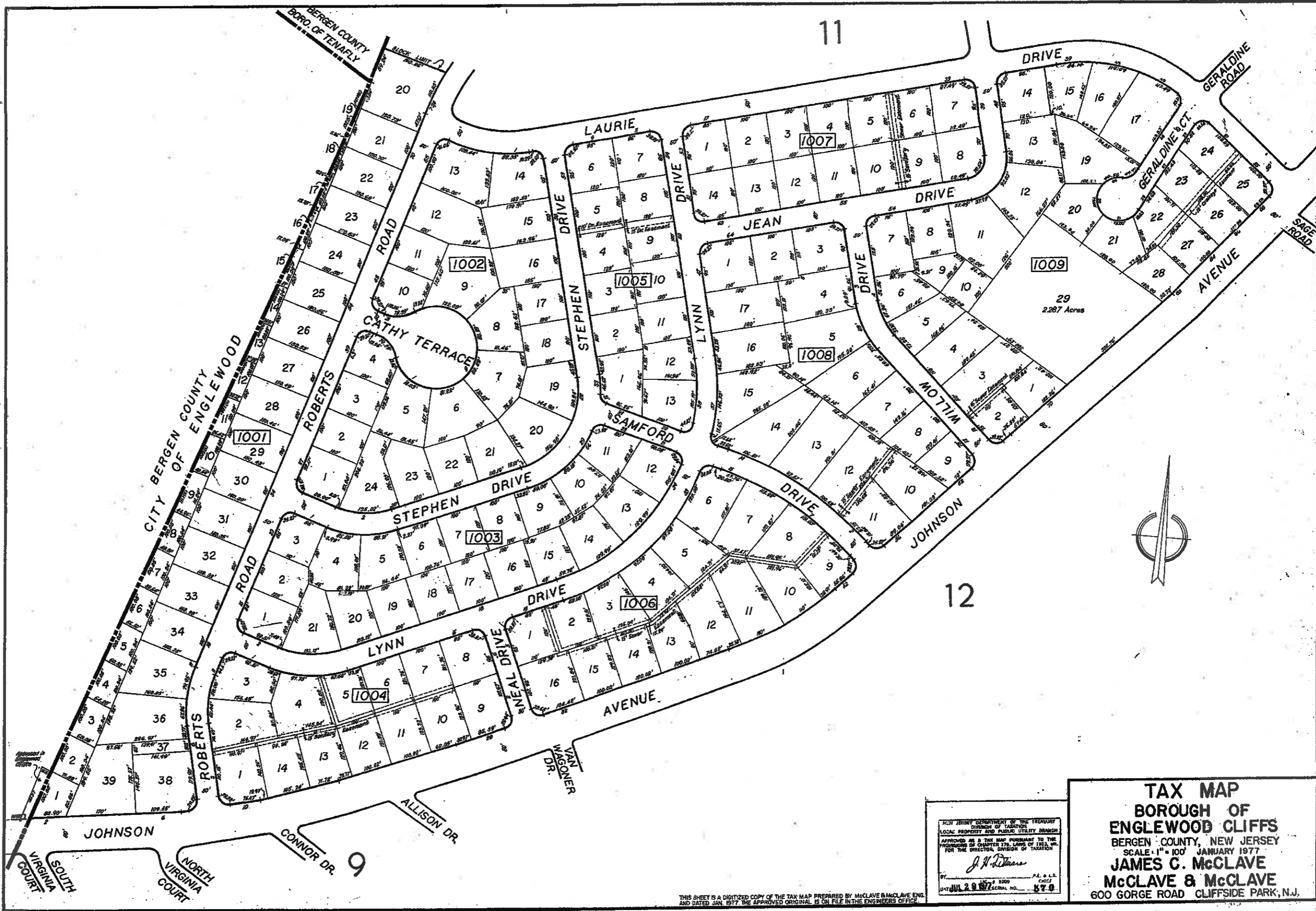
THIS SHEET IS A DIGITIZED COPY OF THE TAX MAP PREPARED BY McCLAVE & McCLAVE, ENGS.  
 AND DATED JAN. 1977. THE APPROVED ORIGINAL IS ON FILE IN THE ENGINEERS' OFFICE.



NEW JERSEY DEPARTMENT OF THE TREASURY  
 DIVISION OF TAXATION  
 LOCAL PROPERTY AND PUBLIC UTILITY BRANCH  
 APPROVED AS A TAX MAP PURSUANT TO THE  
 PROVISIONS OF CHAPTER 176, LAWS OF 1965, P.L.  
 FOR THE DIRECTOR, DIVISION OF TAXATION  
*J. H. [Signature]*  
 BY: [Signature] P.E. & S.  
 DATE: JUL 29 1977 SERIAL NO. 57

**TAX MAP**  
**BOROUGH OF**  
**ENGLEWOOD CLIFFS**  
 BERGEN COUNTY, NEW JERSEY  
 SCALE: 1" = 100' JANUARY 1977  
**JAMES C. McCLAVE**  
**McCLAVE & McCLAVE**  
 600 GORGE ROAD CLIFFSIDE PARK, N.J.

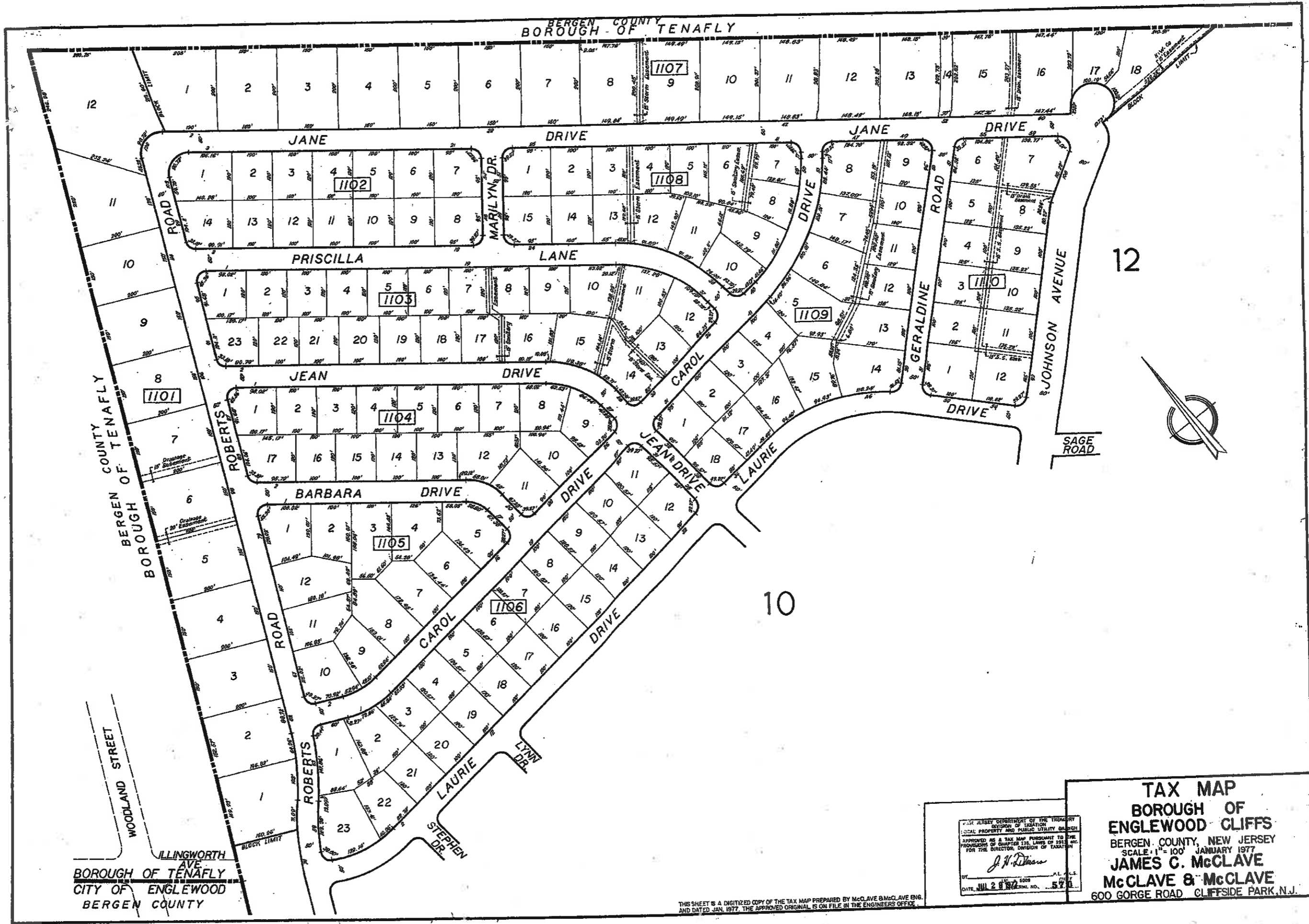
THIS SHEET IS A DIGITIZED COPY OF THE TAX MAP PREPARED BY McCLAVE & McCLAVE ENG. AND DATED JAN. 1977. THE APPROVED ORIGINAL IS ON FILE IN THE ENGINEERS OFFICE.



PLAT JERSEY DIVISION OF THE TREASURY  
 DIVISION OF TAXATION  
 LOCAL PROPERTY AND PUBLIC UTILITY BRANCH  
 APPROVED AS A TAX MAP PURSUANT TO THE  
 PROVISIONS OF CHAPTER 129, LAWS OF 1963, AND  
 FOR THE DIRECTOR, DIVISION OF TAXATION  
*J. H. [Signature]*  
 JUL 29 1977

**TAX MAP**  
**BOROUGH OF**  
**ENGLEWOOD CLIFFS**  
 BERGEN COUNTY, NEW JERSEY  
 SCALE: 1" = 100' JANUARY 1977  
**JAMES C. McCLAVE**  
**McCLAVE & McCLAVE**  
 600 GORGE ROAD CLIFFSIDE PARK, N.J.

THIS SHEET IS A DIGITIZED COPY OF THE TAX MAP PREPARED BY McCLAVE & McCLAVE ENG. AND DATED JAN. 1977. THE APPROVED ORIGINAL IS ON FILE IN THE ENGINEERS OFFICE.

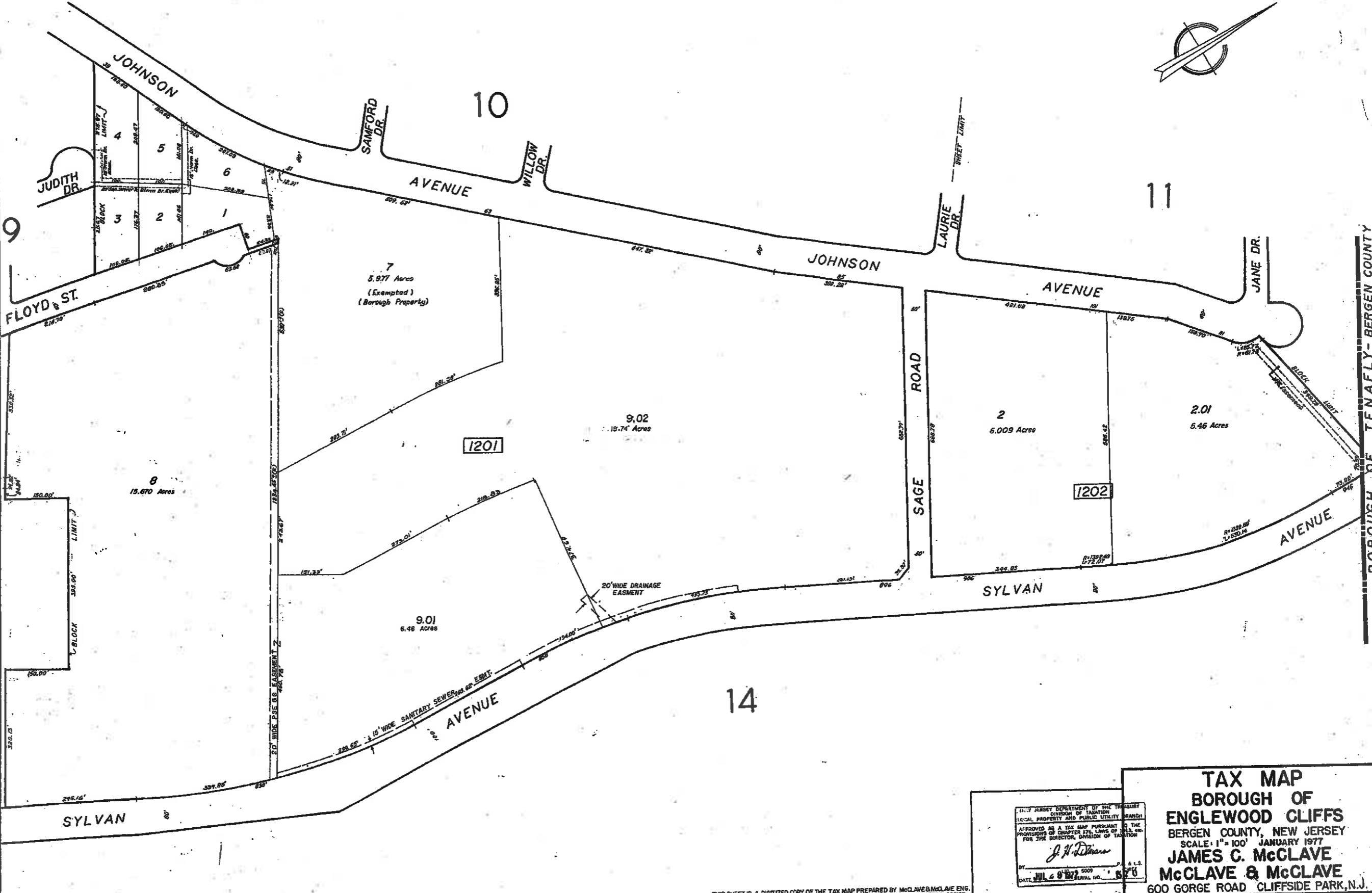
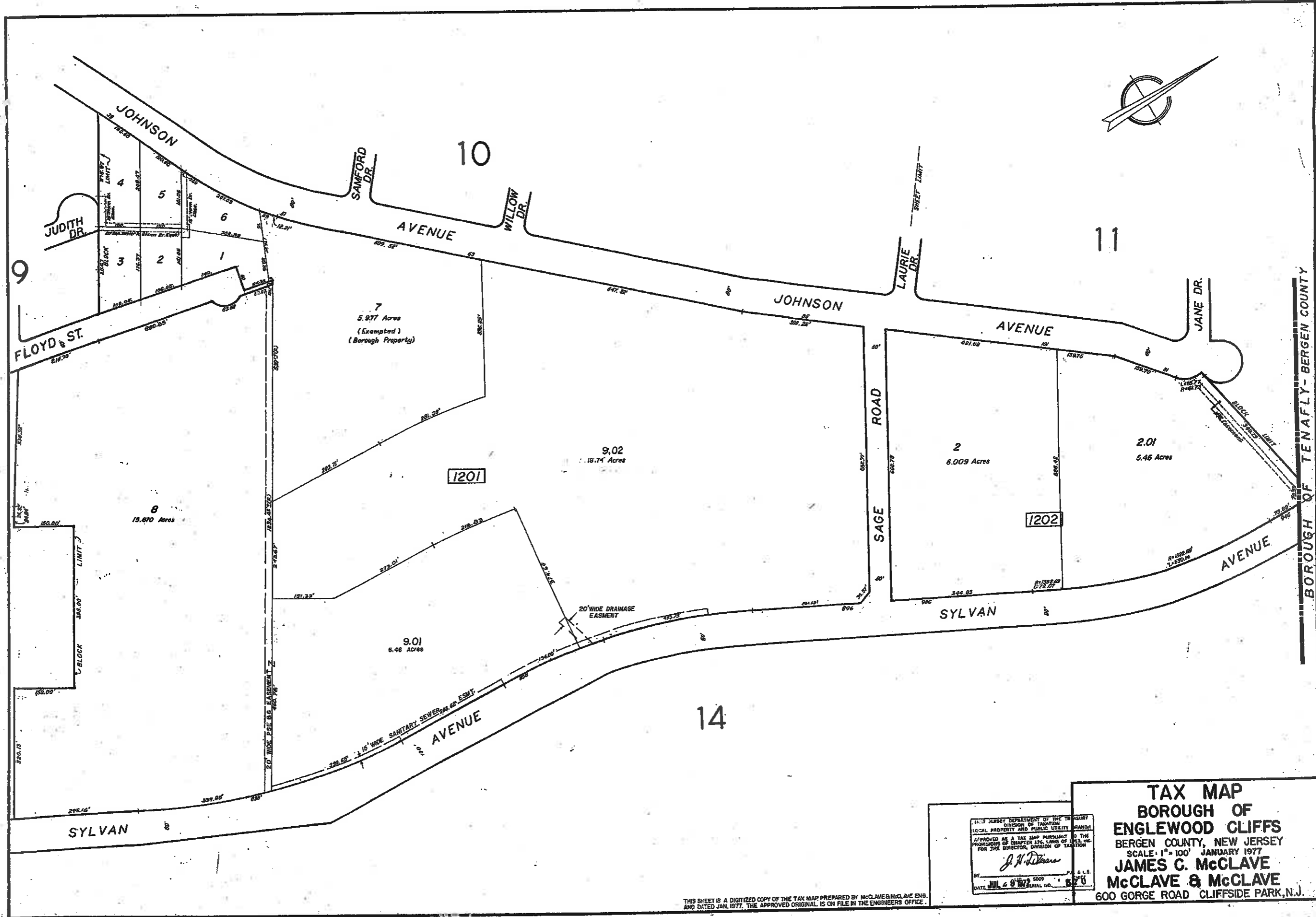


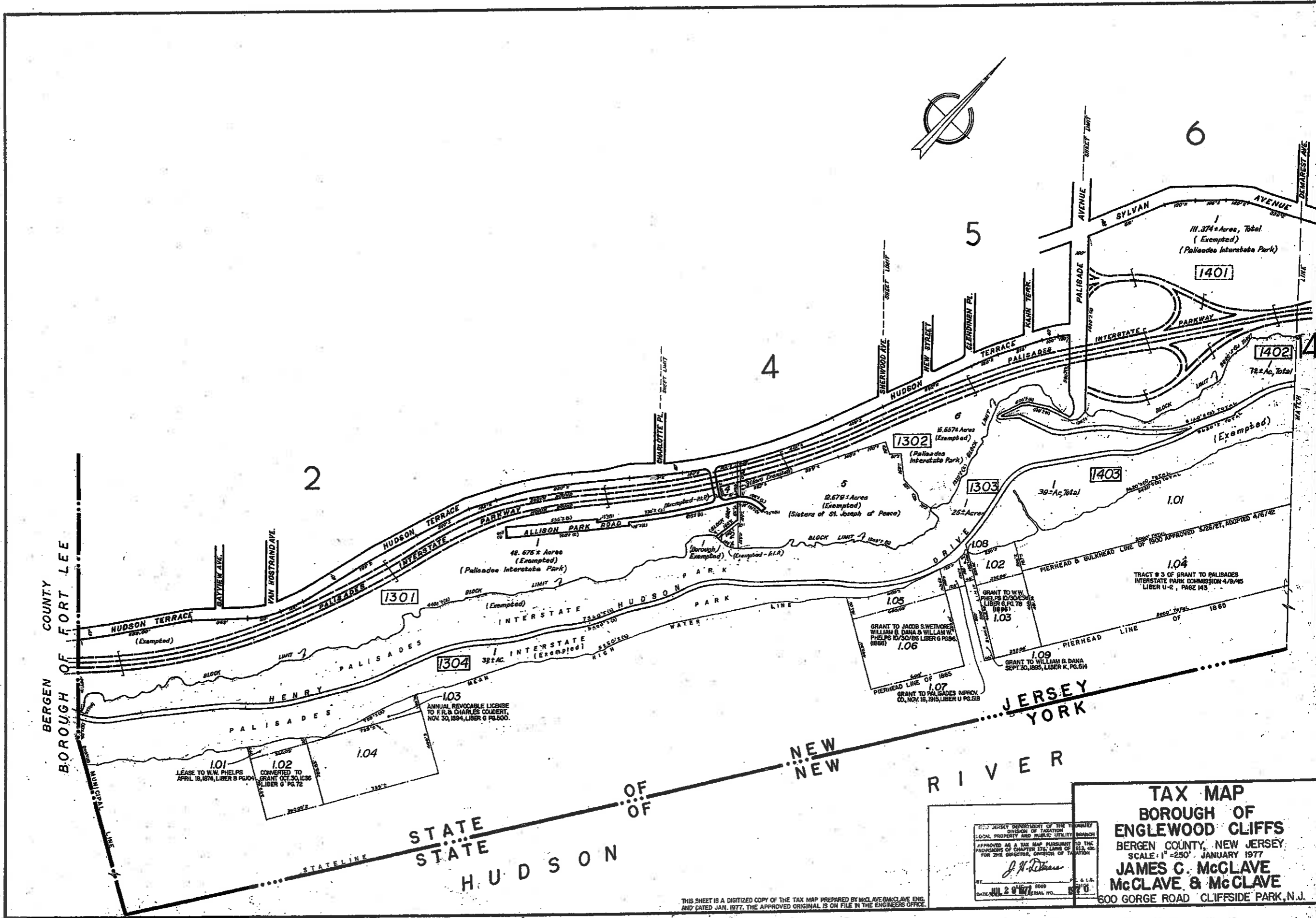
WOODLAND STREET  
ILLINGWORTH AVE  
BOROUGH OF TENAFLY  
CITY OF ENGLEWOOD  
BERGEN COUNTY

STATE OF NEW JERSEY DEPARTMENT OF TREASURY  
DIVISION OF TAXATION  
LOCAL PROPERTY AND PUBLIC UTILITY TAXES  
APPROVED AS A TAX MAP PURSUANT TO THE  
PROVISIONS OF CHAPTER 125, LAWS OF 1977  
FOR THE DIRECTOR, DIVISION OF TAXATION  
*J. H. [Signature]*  
DATE: JUL 2 8 1977 P.L. 5005  
SERIAL NO. 57

**TAX MAP**  
**BOROUGH OF**  
**ENGLEWOOD CLIFFS**  
BERGEN COUNTY, NEW JERSEY  
SCALE: 1" = 100' JANUARY 1977  
**JAMES C. McCLAVE**  
**McCLAVE & McCLAVE**  
600 GORGE ROAD CLIFFSIDE PARK, N.J.

THIS SHEET IS A DIGITIZED COPY OF THE TAX MAP PREPARED BY McCLAVE & McCLAVE ENG. AND DATED JAN. 1977. THE APPROVED ORIGINAL IS ON FILE IN THE ENGINEERS OFFICE.

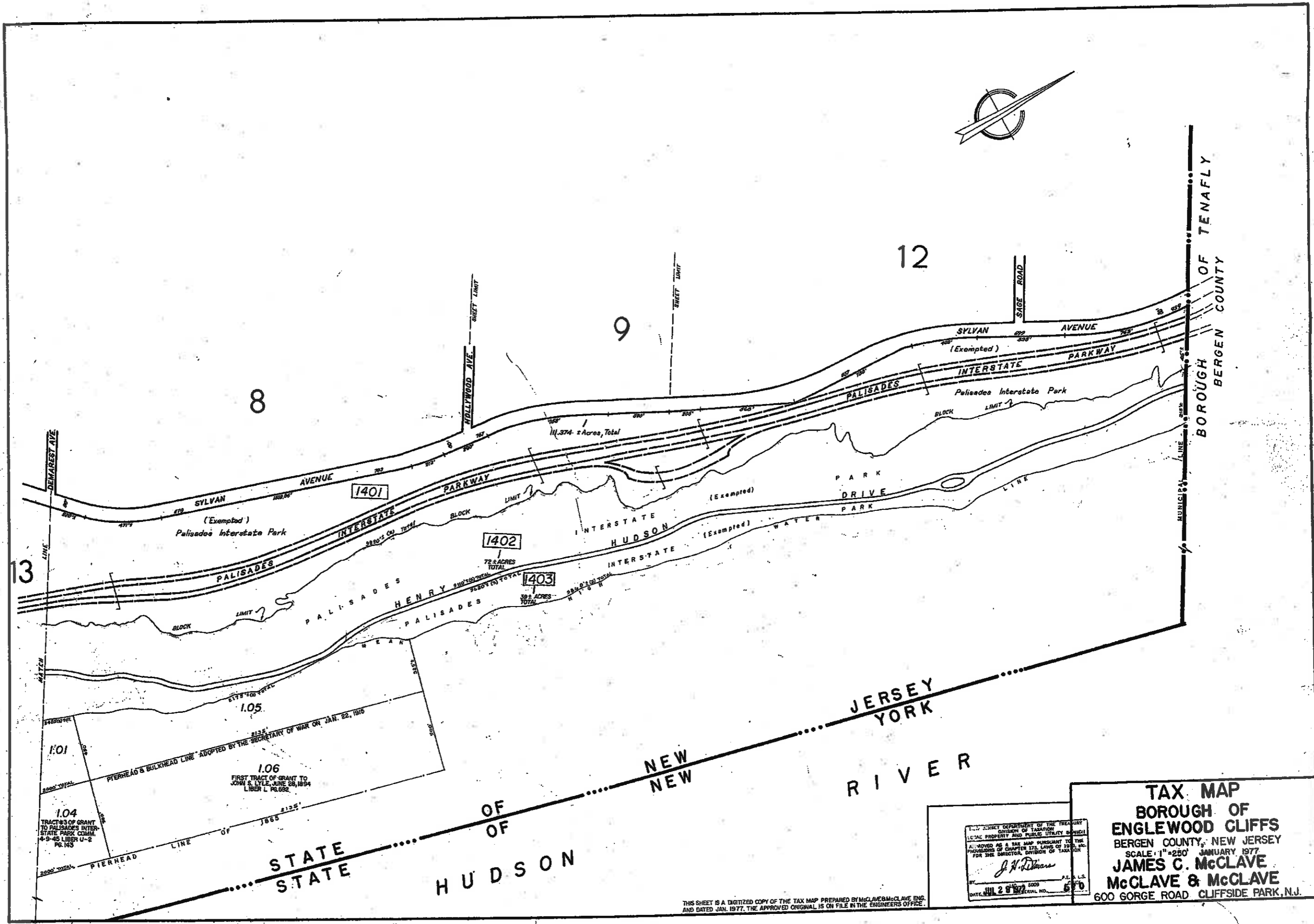
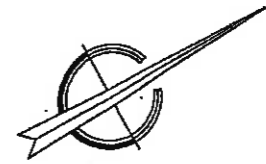




JERSEY DEPARTMENT OF THE TREASURY  
 DIVISION OF TAXATION  
 LOCAL PROPERTY AND PUBLIC UTILITY TAX  
 APPROVED AS A TAX MAP PURSUANT TO THE  
 PROVISIONS OF CHAPTER 232, TITLE 54, OF THE  
 STATUTES OF NEW JERSEY, AS AMENDED  
 FOR THE SECTION, DIVISION OF TAXATION  
*J. N. Deane*  
 BY: \_\_\_\_\_ DATE: \_\_\_\_\_  
 SERIAL NO. \_\_\_\_\_

**TAX MAP**  
**BOROUGH OF**  
**ENGLEWOOD CLIFFS**  
 BERGEN COUNTY, NEW JERSEY  
 SCALE: 1" = 250' JANUARY 1977  
**JAMES C. McCLAVE**  
**McCLAVE & McCLAVE**  
 600 GORGE ROAD CLIFFSIDE PARK, N.J.

THIS SHEET IS A DIGITIZED COPY OF THE TAX MAP PREPARED BY McCLAVE & McCLAVE ENG.  
 AND DATED JAN. 1977. THE APPROVED ORIGINAL IS ON FILE IN THE ENGINEER'S OFFICE.



8 9 12

13

STATE STATE OF OF HUDSON HUDSON RIVER RIVER

BOROUGH OF TENAFLY  
BERGEN COUNTY

1.01  
1.04 TRACTS OF GRANT TO PALISADES INTERSTATE PARK CIVIL 4-9-48 LIBER U-2 PG. 143  
1.05  
1.06 FIRST TRACT OF GRANT TO JOHN S. LYLE, JUNE 28, 1894 LIBER L PG. 652

1401

1402

1403

TREASURY DEPARTMENT OF THE TREASURY  
DIVISION OF TAXATION  
LOCAL PROPERTY AND PUBLIC UTILITY TAXES  
APPROVED AS A TAX MAP PURSUANT TO THE PROVISIONS OF CHAPTER 172, LAWS OF 1960, BY THE DIRECTOR, DIVISION OF TAXATION  
*J. H. Williams*  
BY: J.E. S.L.S.  
DATE: JUL 2 9 1977 ORIGINAL NO. 570

TAX MAP  
BOROUGH OF ENGLEWOOD CLIFFS  
BERGEN COUNTY, NEW JERSEY  
SCALE 1"=250' JANUARY 1977  
JAMES C. McCLAVE  
McCLAVE & McCLAVE  
600 GORGE ROAD CLIFFSIDE PARK, N.J.

THIS SHEET IS A DIGITIZED COPY OF THE TAX MAP PREPARED BY McCLAVE & McCLAVE, ENG. AND DATED JAN. 1977. THE APPROVED ORIGINAL IS ON FILE IN THE ENGINEERS' OFFICE.